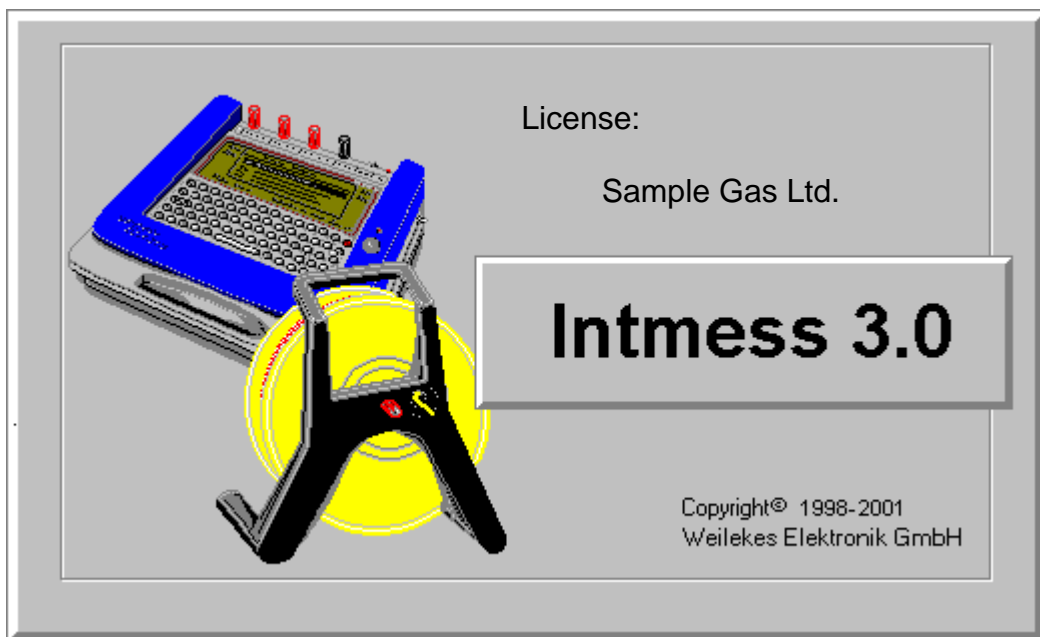


IntMess 3.0

Evaluation of Intensive Measurements

Installation Instructions



Contents

| | |
|--|----------|
| 1. System Requirements and Installation | 4 |
| 1.1 System requirements for IntMess 3.0..... | 4 |
| 1.2 Installing IntMess 3.0..... | 4 |
| 1.3 Setting up bitmaps for graphics and table printing | 4 |
| 2. File Menu | 5 |
| 2.1 New | 5 |
| 2.2 Open..... | 5 |
| 2.3 Append | 5 |
| 2.4 Save | 6 |
| 2.5 Save As... .. | 6 |
| 2.6 Exit | 6 |
| 3. Data Transfer with MoData2 | 7 |
| 3.1 Installation of ActiveSync..... | 7 |
| 3.1.1 Download Links for ActiveSync 3.8..... | 7 |
| 3.2 ActiveSync Connection Setting | 7 |
| 3.3 Connecting MoData2 with ActiveSync..... | 8 |
| 3.4 Transferring data files from MoData to a PC/Notebook folder..... | 9 |

1. System Requirements and Installation

1.1 System requirements for IntMess 3.0

- Pentium 2, 300 MHz, Windows 95/98/ME/NT/2000/XP
- 48 MB for Win95/98/ME, 64 MB for WinNT/2000/XP
- Graphic resolution: 800x600 pixels, 256 colors
- 10 MB of available hard-disk space
- One available serial interface for the connection to the MoData

1.2 Installing IntMess 3.0

1. Insert the IntMess program CD in the CD drive. If the installation program does not start automatically, execute the "setup.exe" file from the CD.
2. Follow the instructions of the setup program.
3. After the installation has been completed, please copy your license file "Intmess.liz" from the license diskette to the IntMess program directory (e.g. "C:\Programs\IntMess").
4. If your license diskette also contains an Intmess.exe file, copy this one to the IntMess program directory (e.g. "C:\Programs\IntMess"), too.
5. The "IntMess 3.0" program is now completely installed.

1.3 Setting up bitmaps for graphics and table printing

The IntMess program directory contains the "plot.bmp" and "tabelle.bmp" files. Replace these two files by your own logos in BMP format to design your printouts with your corporate logo. The aspect ratio of the logos may not be changed. The size of the bitmaps, however, is automatically adjusted by IntMess.

2. File Menu

The "File" menu supports you in managing your Intensive Measurement files. It allows you to open individual intensive measurements for editing, attach further intensive measurements and then save the entire measurement test series as a whole in a different folder. In addition, the "File" menu enables you to print the test series as a table or graph.

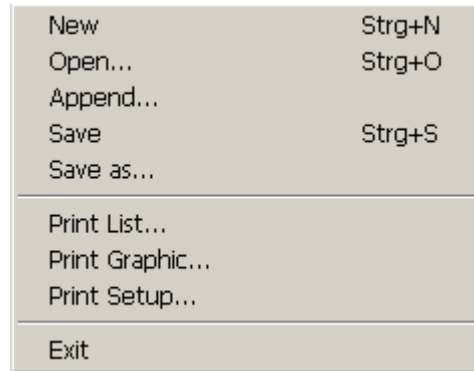


Figure 1: File menu

2.1 New

Select this menu if you would like to enter the measuring values for a test series manually. Upon choosing the "File"->"New" command, IntMess generates an empty test series line for you to edit manually afterwards. You may generate further test series lines via the "Edit"->"Insert" menu.

2.2 Open

You may load intensive measurement files for editing via the "File" -> "Open..." menu. The "Open" dialog known from other Windows programs appears. As a standard, the display shows only files with the file extension ".imd".

Compatibility with IntMess 2.0 for DOS

IntMess 3.0 may only edit files with the file extension ".imd". Older files with the extension ".dta" must first be converted with the DOS version IntMess 2.0. For this, load the respective intensive measurement file using the IntMess 2.0 DOS program and save it anew. Afterwards, the intensive measurement file is in the ".imd" format and you may edit it with IntMess 3.0.

2.3 Append

The "File" -> "Append" menu is only active when a measurement file has already been loaded for editing before. This menu enables you to attach another measurement file to an already loaded measurement file; for instance, in order to combine several short test series to one large test series.

After having attached the file(s), sort the large test series on ascending measuring meters via the "Edit" -> "Sort" menu and then save it under a new file name via the "File" -> "Save As..." menu.

2.4 Save

The **"File"->"Save"** menu saves the current test series under the file name that has been used before. Choose the **"File"->"Save As..."** menu to save the current test series under a new file name.

2.5 Save As...

Save a loaded test series under a new file name using this command.

2.6 Exit

Exit the IntMess 3.0 program via this command.

3. Data Transfer with MoData2

In contrast to the MoData2 direct transfer with IntMess 3.0, the data transfer with MoData2 is done outside of IntMess 3.0 only.

For the data transfer with a MoData2 you've to install the Microsoft additional software "ActiveSync". A direct transfer like for MoData1 with "**MoData**" -> "**Data Transfer**" is not possible with MoData2.

3.1 Installation of ActiveSync

For the data transfer from MoData2 to the PC/Notebook you've to install "ActiveSync" software from Microsoft installiert werden. We recommend to only use the version ActiveSync 3.8 from the original MoData2 IntMobil CD.

Newer versions of ActiveSync (>= version 4.0) or higher may not functioning correctly.

3.1.1 Download Links for ActiveSync 3.8

ActiveSync German: www.weilekes.de/Download/msasync.exe
ActiveSync English: www.weilekes.de/Download/msasync_e.exe

3.2 ActiveSync Connection Setting

Please setup the connection settings of ActiveSync accordingly to the free serial port of your PC / Notebook:

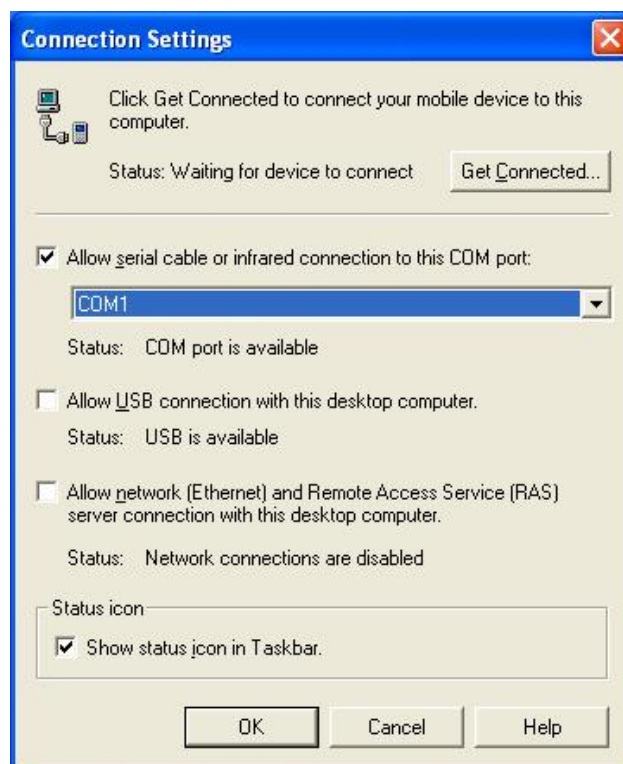


Figure 2: ActiveSync Connection Settings

3.3 Connecting MoData2 with ActiveSync

As correct preparation for the connection with ActiveSync the grey disc symbol has to be visible in the windows desktop status bar:



ActiveSync is ready for the connection with MoData2

If the grey symbol is marked with a red cross, ActiveSync is deactivated and therefore not read:



ActiveSync is deactivated, no connection with MoData2 possible

If ActiveSync is deactivated, you've to click with the right mouse button on the ActiveSync symbol in the status bar and reactivate the serial port.

If ActiveSync is ready, switch on MoData2 and then connect the serial transfer cable with your PC/Notebook. Don't connect first and then switch on MoData2.

If the connection is successfully established, the symbol in the task bar changes its colour from grey to green:



ActiveSync is ready and connected with MoData2

3.4 Transferring data files from MoData to a PC/Notebook folder

As soon as the green ActiveSync symbol in the windows task bar shows a successful connection to the MoData2, you can start your Windows Explorer and click on "**Mobile Device**" in the left part of the Windows Explorer screen.

By clicking on "**Mobile Device**" and "**Handheld PC Explorer**" you have to choose the folder :
 "\ **Compact Flash** \ **IntMobil** \ **Backup** \"

In the right part of the Windows Explorer you will then see all the available IntMobil files on the MoData2 Compact-Flash:

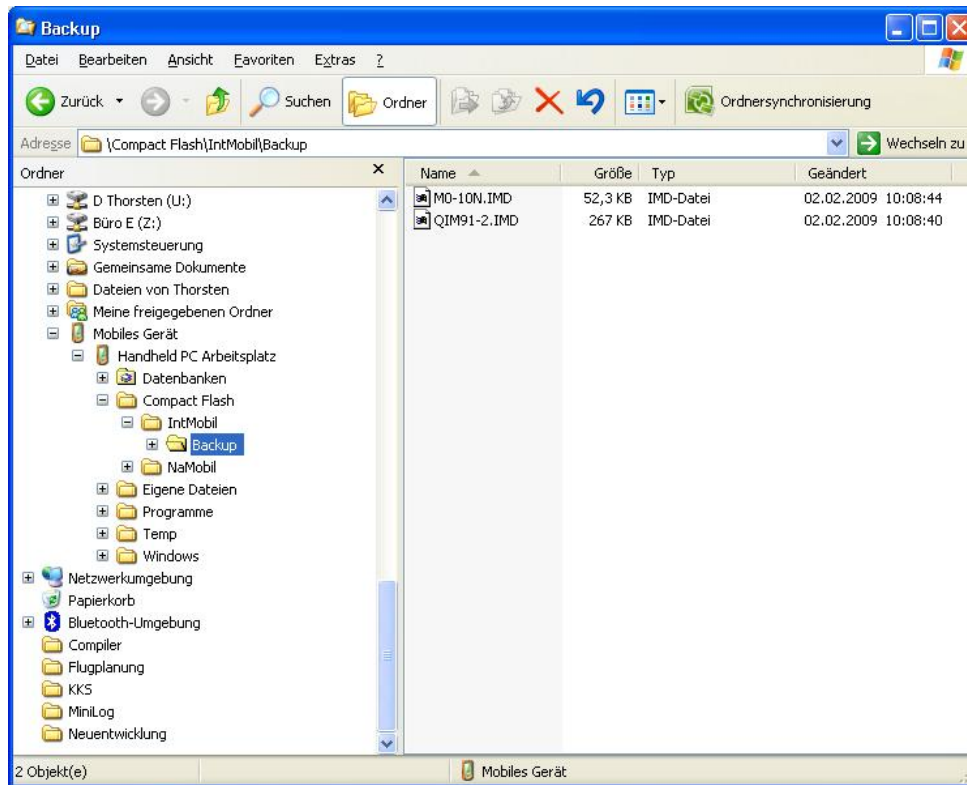


Figure 3: Windows Explorer showing MoData2 IntMobil files

Mark all files you want to transfer from the MoData2 to your PC/Notebook and copy them into the windows clipboard via menu "**Edit**" -> "**Copy**".

Then choose the target folder (i.e. "**C:\Program Files\IntMess\MoData**") and copy the files from the clipboard into the target folder via "**Edit**" -> "**Paste**".

Now you can open the files with IntMess 3.0 and "**Files**" -> "**Open**".